

OpenFresco *Express*

Andreas Schellenberg

Carl Misra

Stephen Mahin

The Pacific Earthquake Engineering Research Center (PEER)

OpenFresco

OpenFresco*Express* Overview

- ★ Graphical user interface that is designed to simplify the running of hybrid simulations
- ★ Guides the user through a step-by-step process to define the key parameters in a hybrid simulation
- ★ Plots test data and error monitors in real time for checking the validity of results
- ★ Allows the user to perform ground motion or free vibration tests

Structure

Loading

ExpSetup

ExpControl

Analysis

User Tips



OpenFrescoExpress

Release 1.0: May 2012

Developed by

Andreas Schellenberg, Ph.D., P.E.
Dep. of Civil and Env. Eng.
University of California, Berkeley

Carl Misra, M.S.
Dep. of Civil and Env. Eng.
University of California, Berkeley

Stephen Mahin, Ph.D.
Dep. of Civil and Env. Eng.
University of California, Berkeley

OpenFresco Express is supported by funds from
The Pacific Earthquake Engineering Research Center (PEER)



(C) Copyright 2011, PEER. All Rights Reserved.

Structure

Loading

ExpSetup

ExpControl

Analysis

User Tips



Disclaimer

Disclaimer

The Pacific Earthquake Engineering Research Center (PEER) and the authors provide this software without a signed license. It is distributed by PEER "as is," as a public service, without any additional services from, or licensing by, PEER. The program has been developed by researchers at PEER. The authors and PEER do not warrant that the operation of the program will be uninterrupted or error-free.

Please acknowledge in the acknowledgment section of any resulting publications the use of OpenFresco Express.

IN NO EVENT SHALL PEER OR THE AUTHORS BE LIABLE FOR PERSONAL INJURY, OR ANY DIRECT, INDIRECT, SPECIAL, INCIDENTAL, OR CONSEQUENTIAL DAMAGES WHATSOEVER, INCLUDING, WITHOUT LIMITATION, DAMAGES FOR LOST PROFITS, LOSS OF DATA BUSINESS INTERRUPTION OR ANY OTHER COMMERCIAL DAMAGES OR LOSSES ARISING OUT OF OR RELATED TO THE USE OR INABILITY TO USE THE SOFTWARE, HOWEVER CAUSED, REGARDLESS OF THE THEORY OF LIABILITY AND EVEN IF PEER OR THE AUTHORS HAVE BEEN ADVISED OF THE POSSIBILITY OF SUCH DAMAGES.

PEER AND THE AUTHORS SPECIFICALLY DISCLAIM ANY WARRANTIES, INCLUDING BUT NOT LIMITED TO, THE IMPLIED WARRANTIES OF MERCHANTABILITY AND FITNESS FOR A PARTICULAR PURPOSE. NEITHER PEER NOR THE AUTHORS REPRESENT OR WARRANT THAT THE PROGRAM DOES NOT INFRINGE THE INTELLECTUAL PROPERTY, PROPRIETARY OR CONTRACTUAL RIGHTS OF THIRD PARTIES. THE SOFTWARE PROVIDED HEREUNDER IS ON AN "AS IS" BASIS, AND PEER AND THE AUTHORS HAVE NO OBLIGATIONS TO PROVIDE MAINTENANCE, SUPPORT, UPDATES, ENHANCEMENTS, OR MODIFICATIONS.

close

Structure

Loading

ExpSetup

ExpControl

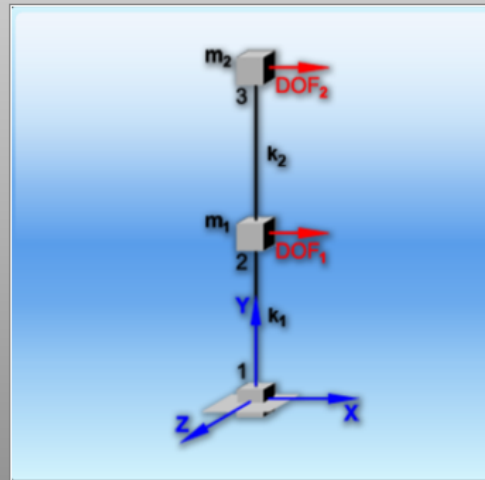
Analysis

User Tips



PEER

Structural Properties

m1 m2 ?k1 k2 ?

Period: 0.94787 0.2975

Rayleigh

 ?

Structure

Loading

ExpSetup

ExpControl

Analysis

User Tips



Loading

Ground
Motions

Free
Vibration

DOF 1

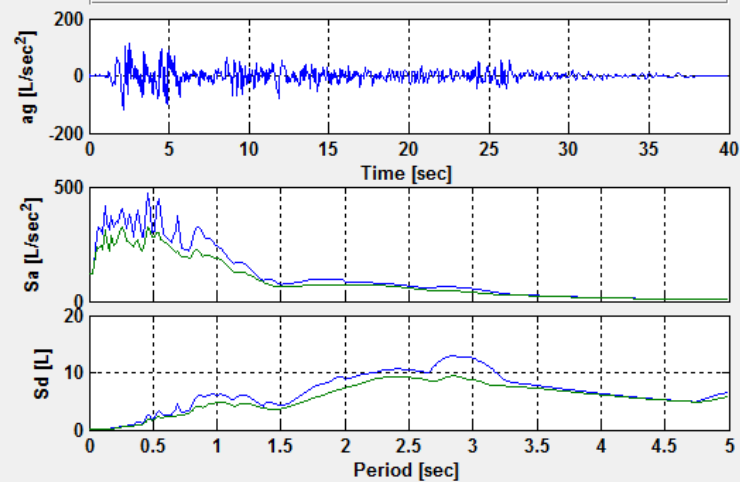
File

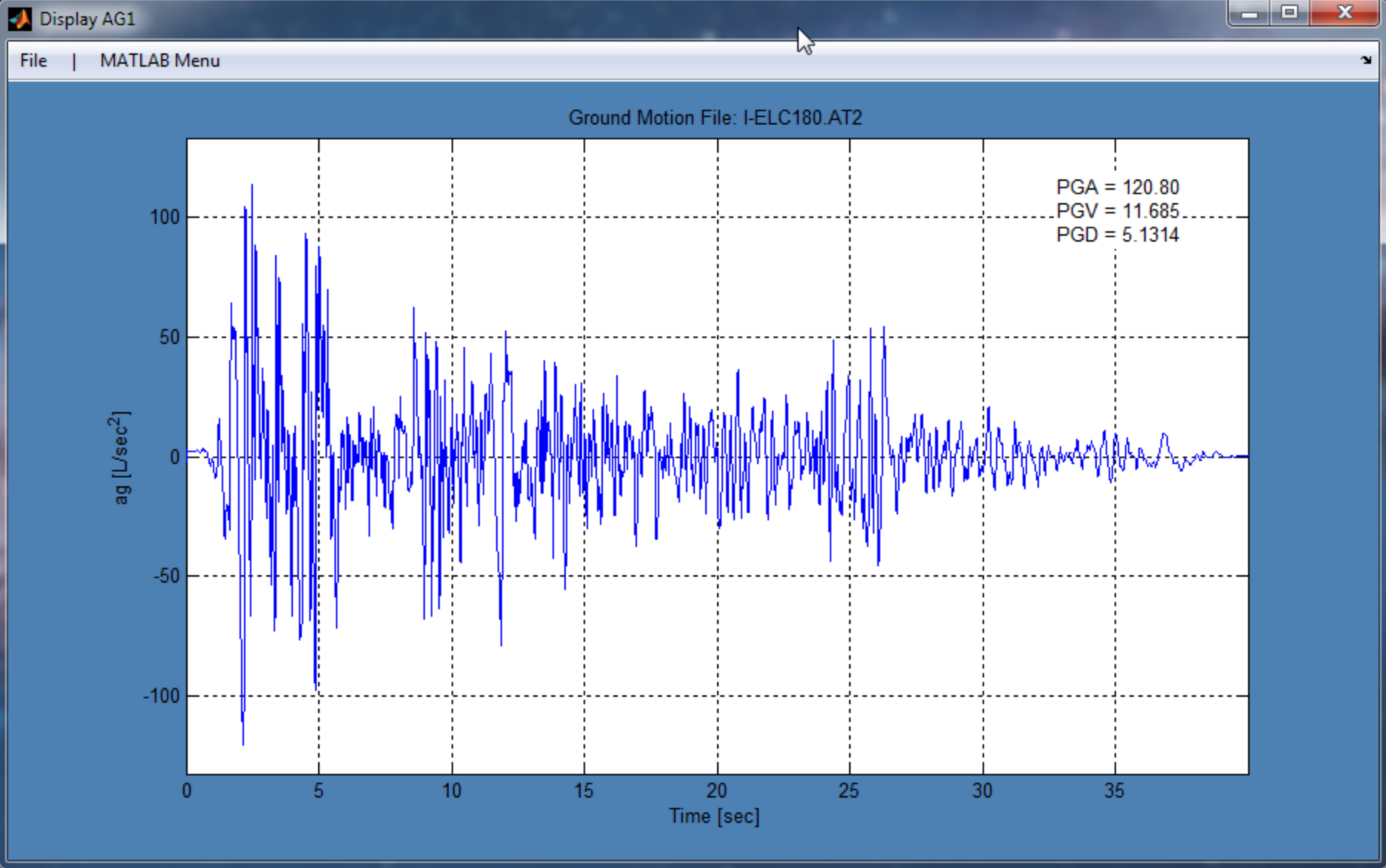
dt 0.01

Scale Factors

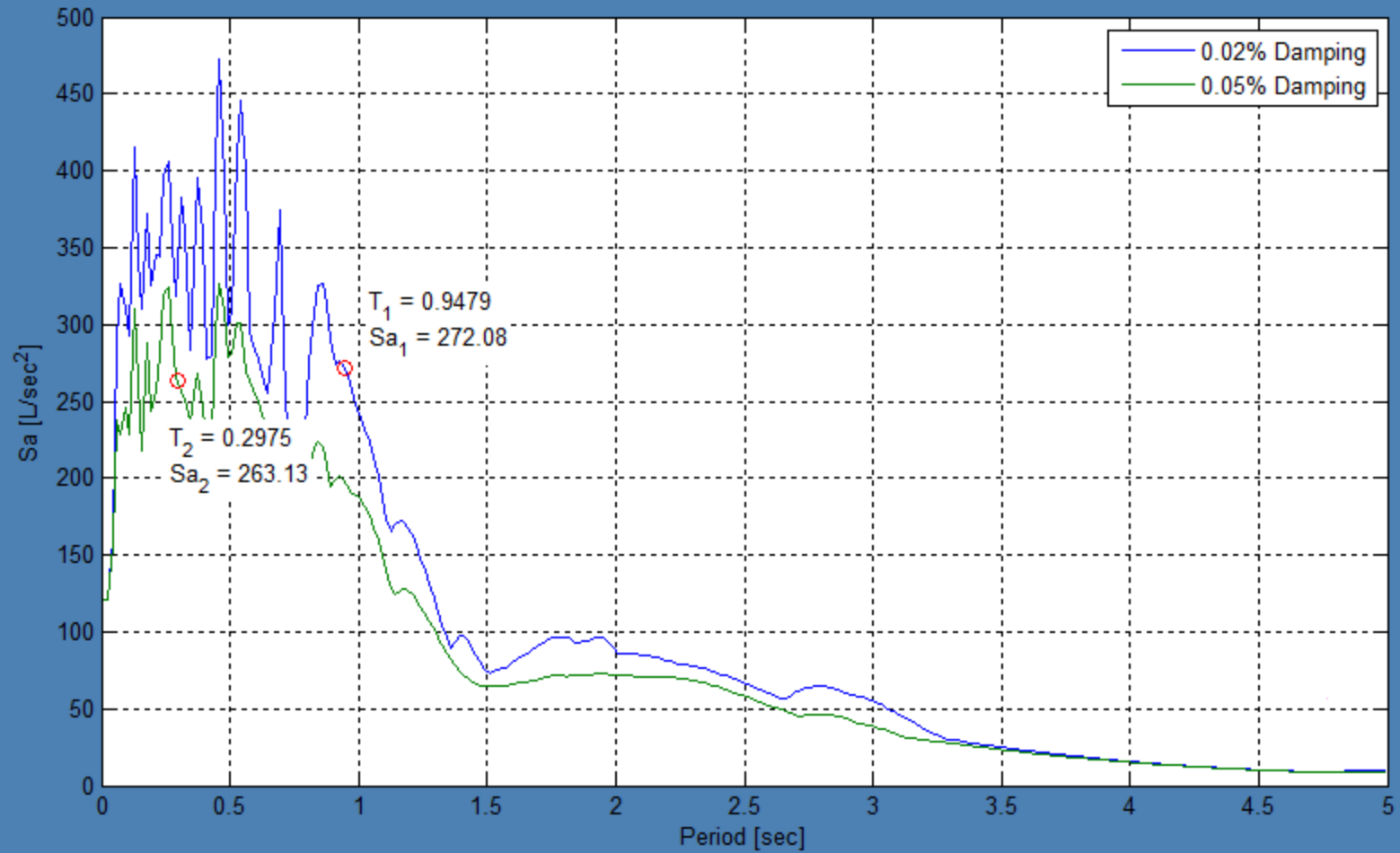
Amplitude

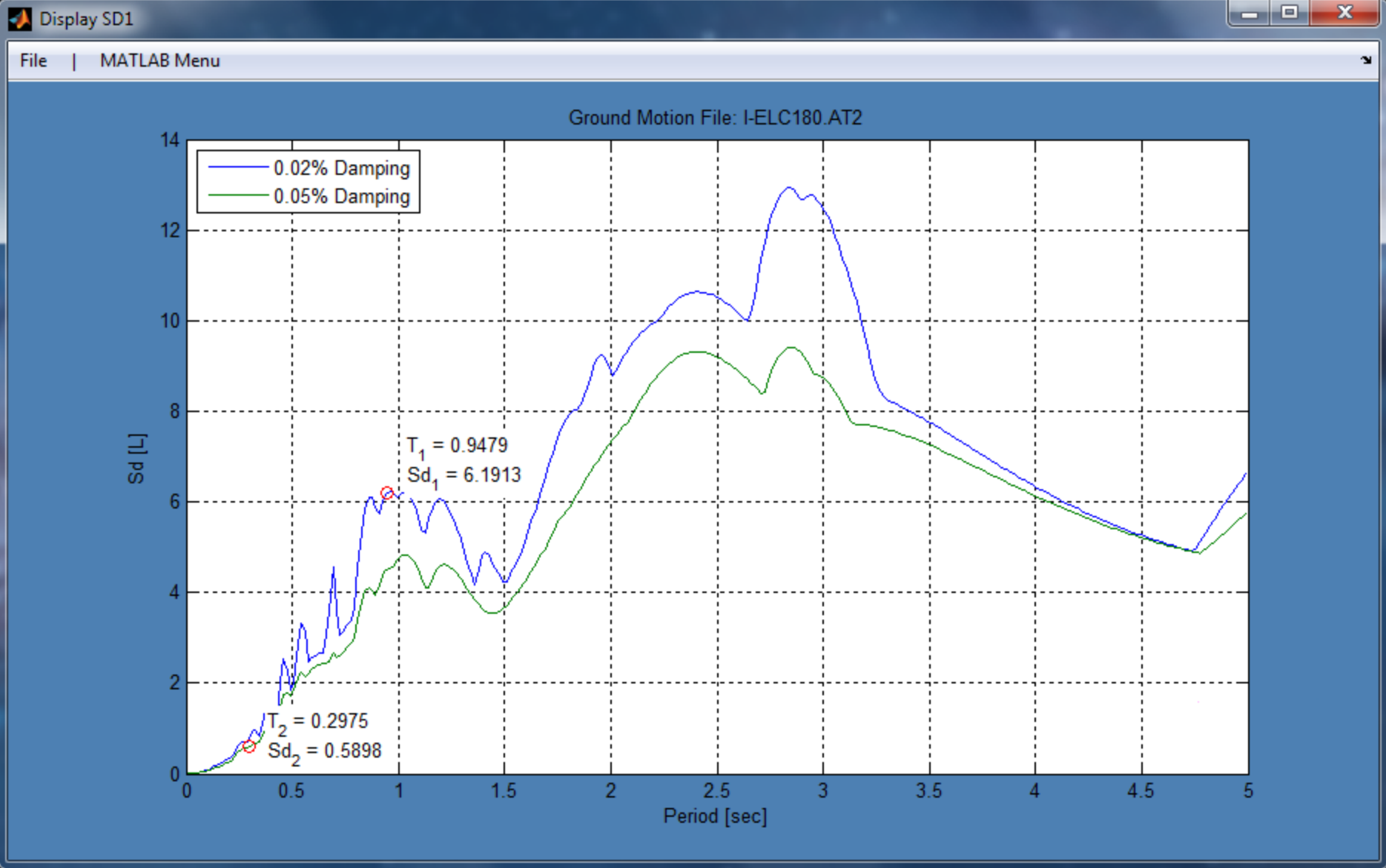
Time





Ground Motion File: I-ELC180.AT2





Structure

Loading

ExpSetup

ExpControl

Analysis

User Tips



PEER

Loading

Ground
Motions

Free
Vibration

Initial Displacement

Mode 1

1 1.1861



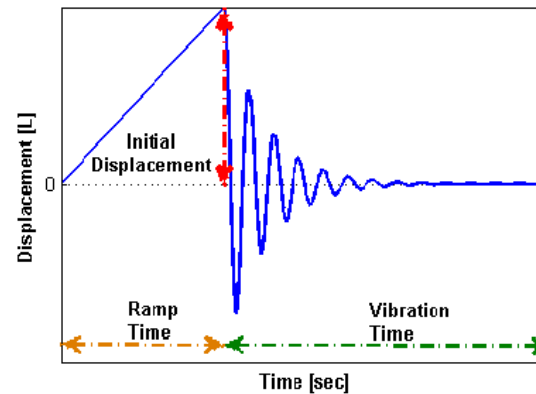
Ramp Time

5



Free Vibration Time

25



Structure

Loading

ExpSetup

ExpControl

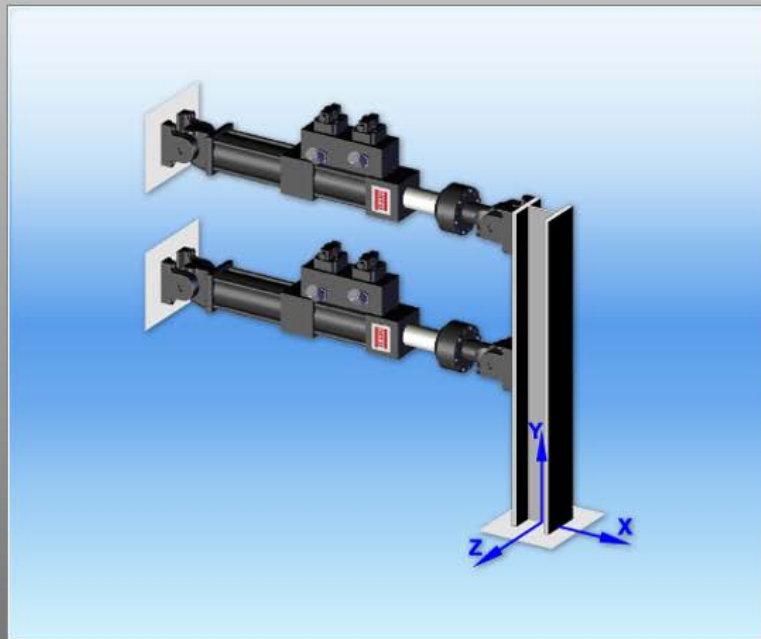
Analysis

User Tips



PEER

Experimental Setup



Experimental Control

Simulation

Real
Controller

Define Control

SCRAMNet

Memory Offset (bytes)

381020

Number of Actuator
Channels

8

Structure

Loading

ExpSetup

ExpControl

Analysis

User Tips



PEER

Experimental Control

Simulation

Real
Controller

Define Control

MTSCsi

Configuration File Name

OpenFresco_mNEES



Configuration File Path

C:\Users\Andreas\Documents\MTS_CSI\Open

Ramp Time

0.1

Structure

Loading

ExpSetup

ExpControl

Analysis

User Tips



PEER

Structure

Loading

ExpSetup

ExpControl

Analysis

User Tips



PEER

Experimental Control

Simulation

Real
Controller

Story 1

Define Control

SimUniaxialMaterial

Number of Actuators

2

Choose Material

Steel - Bilinear



Yield Strength (Fy)

2.0



Initial Elastic Modulus (E)

2.8

Strain Hardening Ratio (b)

0.1

Structure

Loading

ExpSetup

ExpControl

Analysis

User Tips



Analysis

dt: < 0.094696 ?

Write TCL File

Generate Report

Would you like to animate the response? ?

☐ No☒ Yes

Run New Test

Quit

Structure

Loading

ExpSetup

ExpControl

Analysis

User Tips



Report

Input Summary

=====

OpenFresco Express v1.0

03-Jun-2012 14:48:33

=====

- o File : OPFE_Report.txt
- o Purpose: Summary of inputs for use with OpenFresco Express

Model Properties:

=====

- o Type: 2 DOF Shear Building
- o Mass [M]: [0.0400 0.0000; 0.0000 0.0200]
- o Stiffness [F/L]: [8.4000 -5.6000; -5.6000 5.6000]
- o Period [sec]: 0.9479 0.2975
- o Frequency [Hz]: 1.0550 3.3614
- o Damping Type: Rayleigh
- o Damping Values: 0.0200 0.0500
- o Mass Proportional Damping Factor: 0.0633
- o Stiffness Proportional Damping Factor: 0.0046

Loading:

=====

- o Ground Motion: I-ELC180.AT2

OK

Structure

Loading

ExpSetup

ExpControl

Analysis

User Tips



Analysis

dt: < 0.094696 ?

Write TCL File

Generate Report

Would you like to animate the response? ?

☐ No

☒ Yes



Run New Test

Quit

Structure

Loading

ExpSetup

ExpControl

Analysis

User Tips



Analysis

dt: < 0.094696 ?

Write TCL File

Generate Report

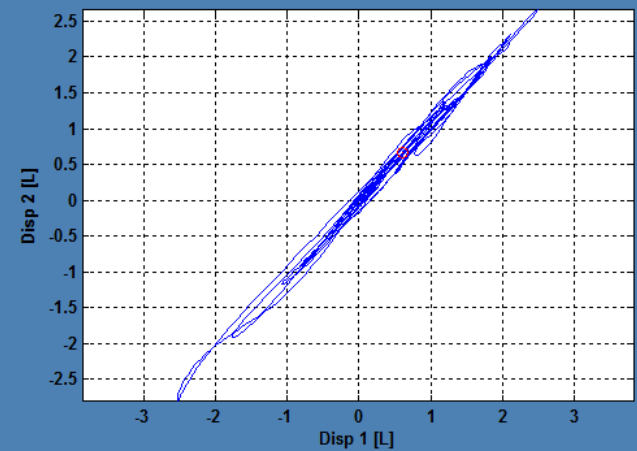
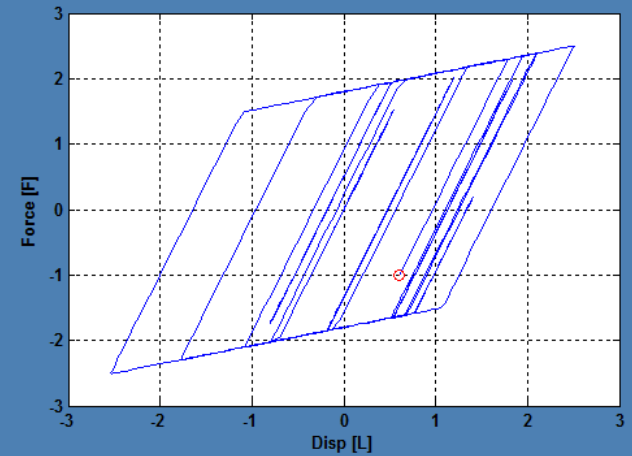
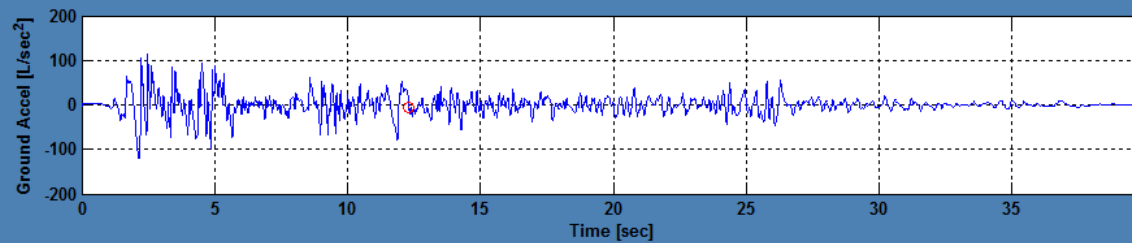
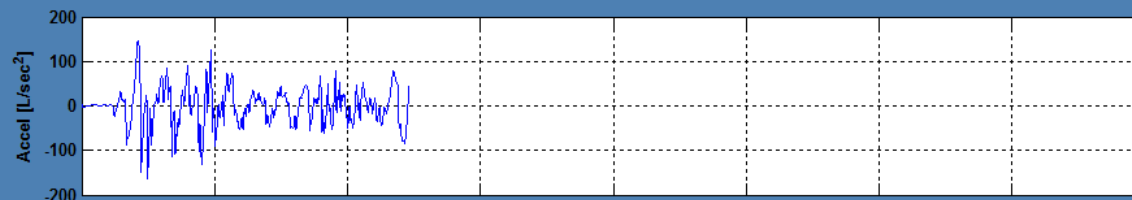
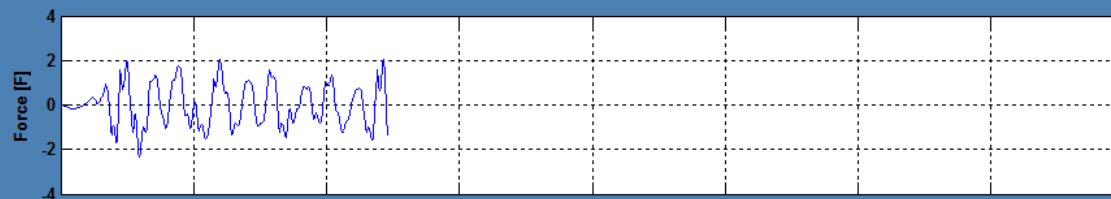
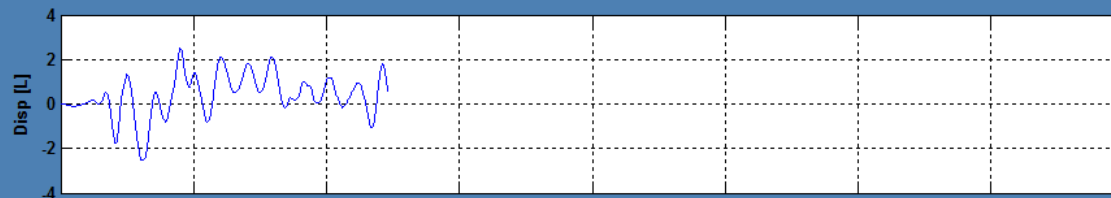
Would you like to animate the response? ?

☐ No☒ Yes

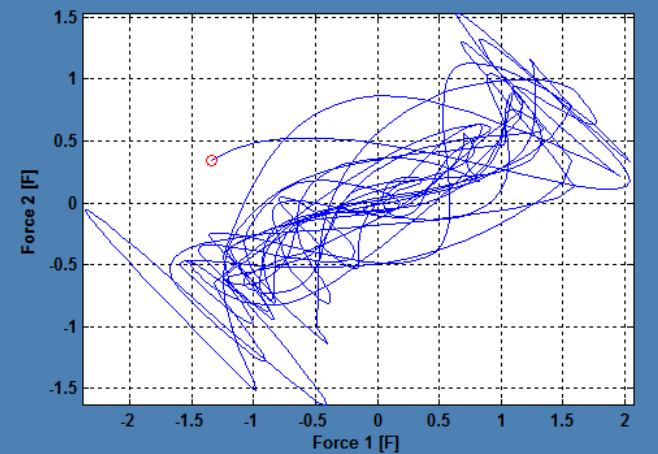
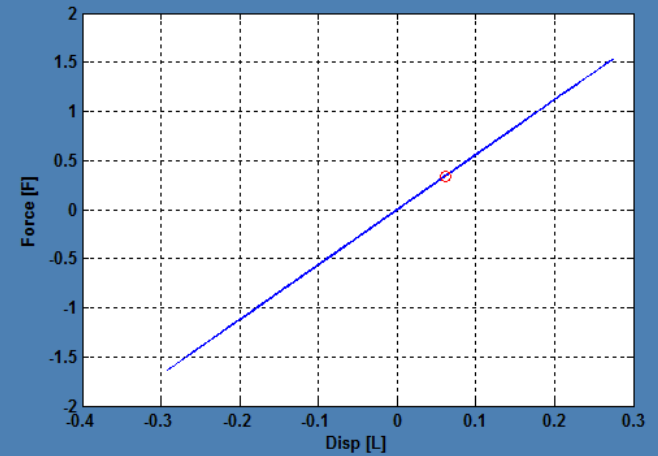
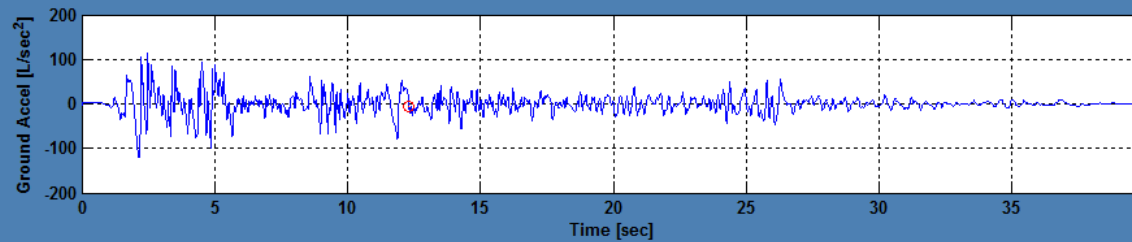
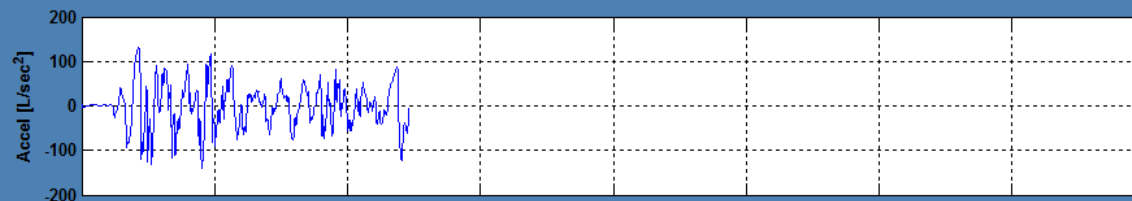
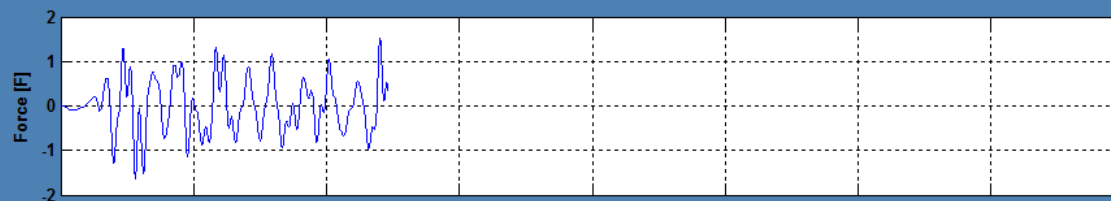
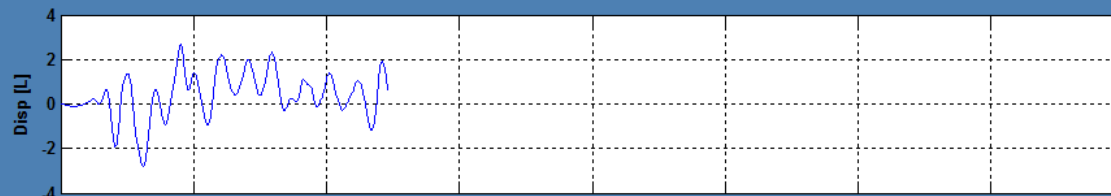
Run New Test

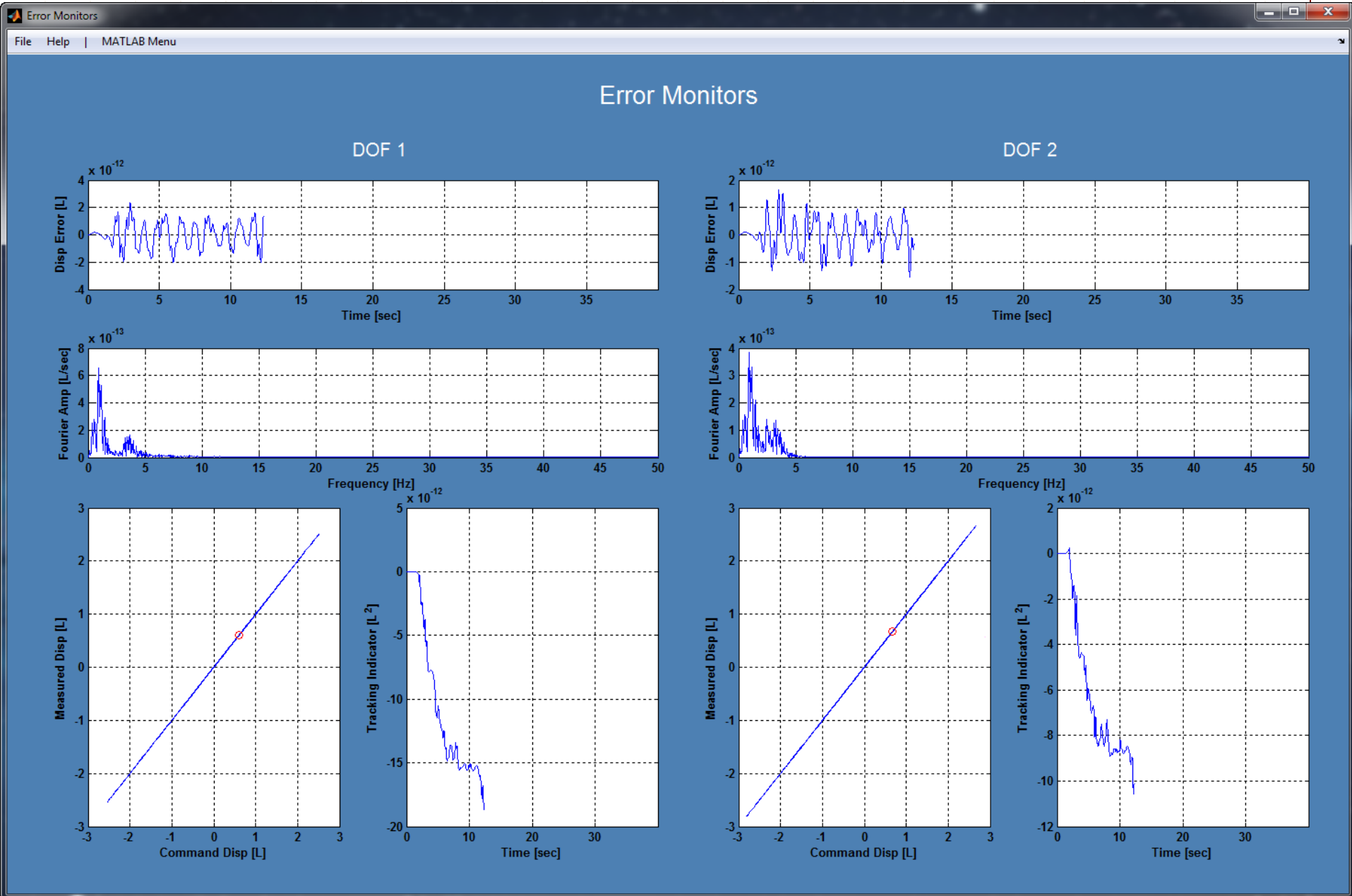
Quit

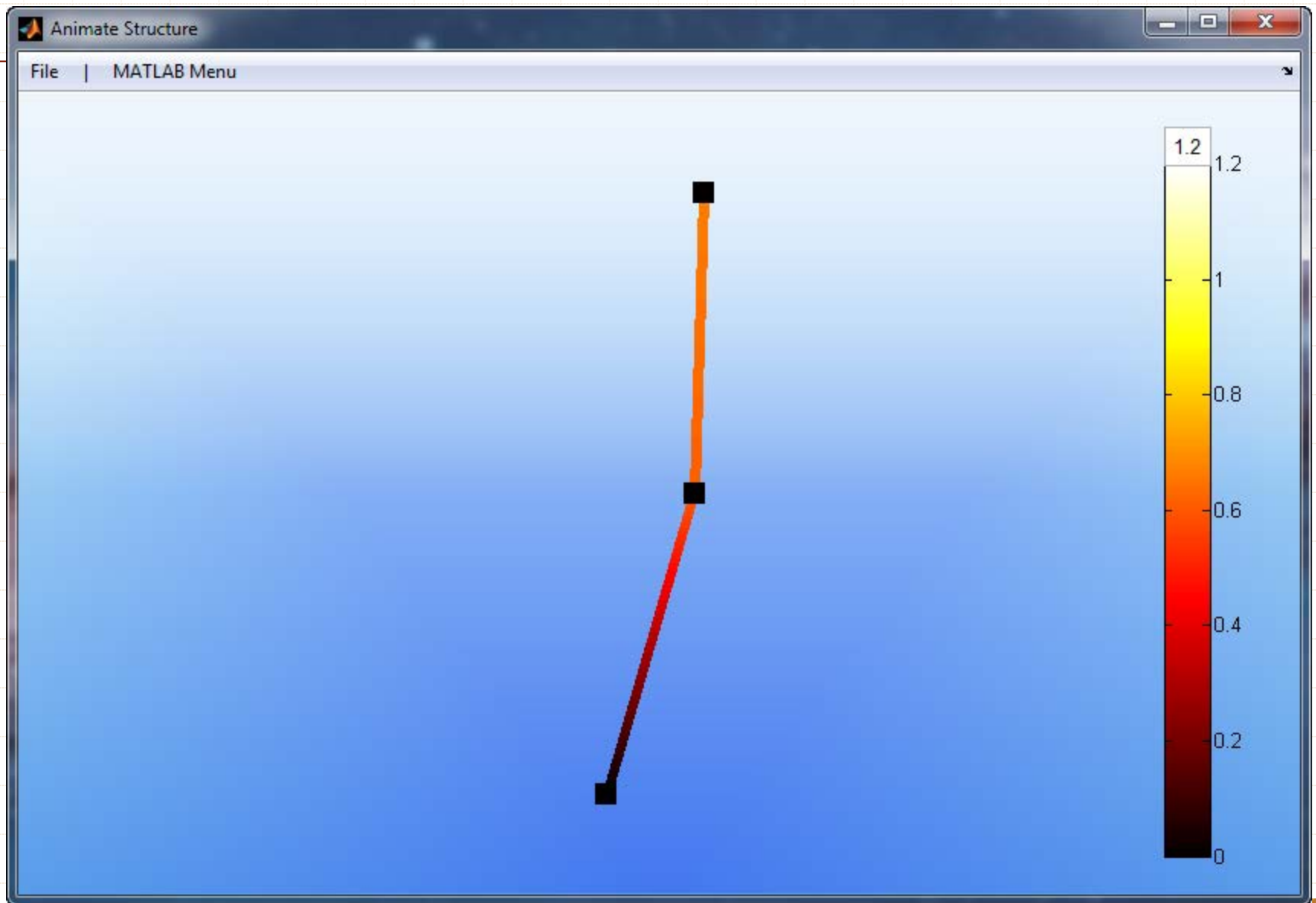
Structural Output: DOF 1



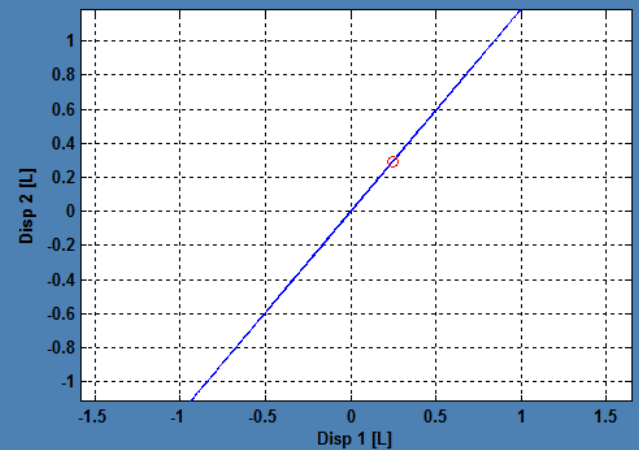
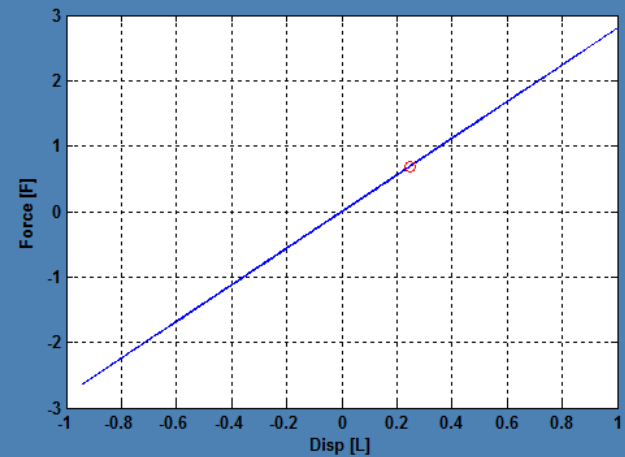
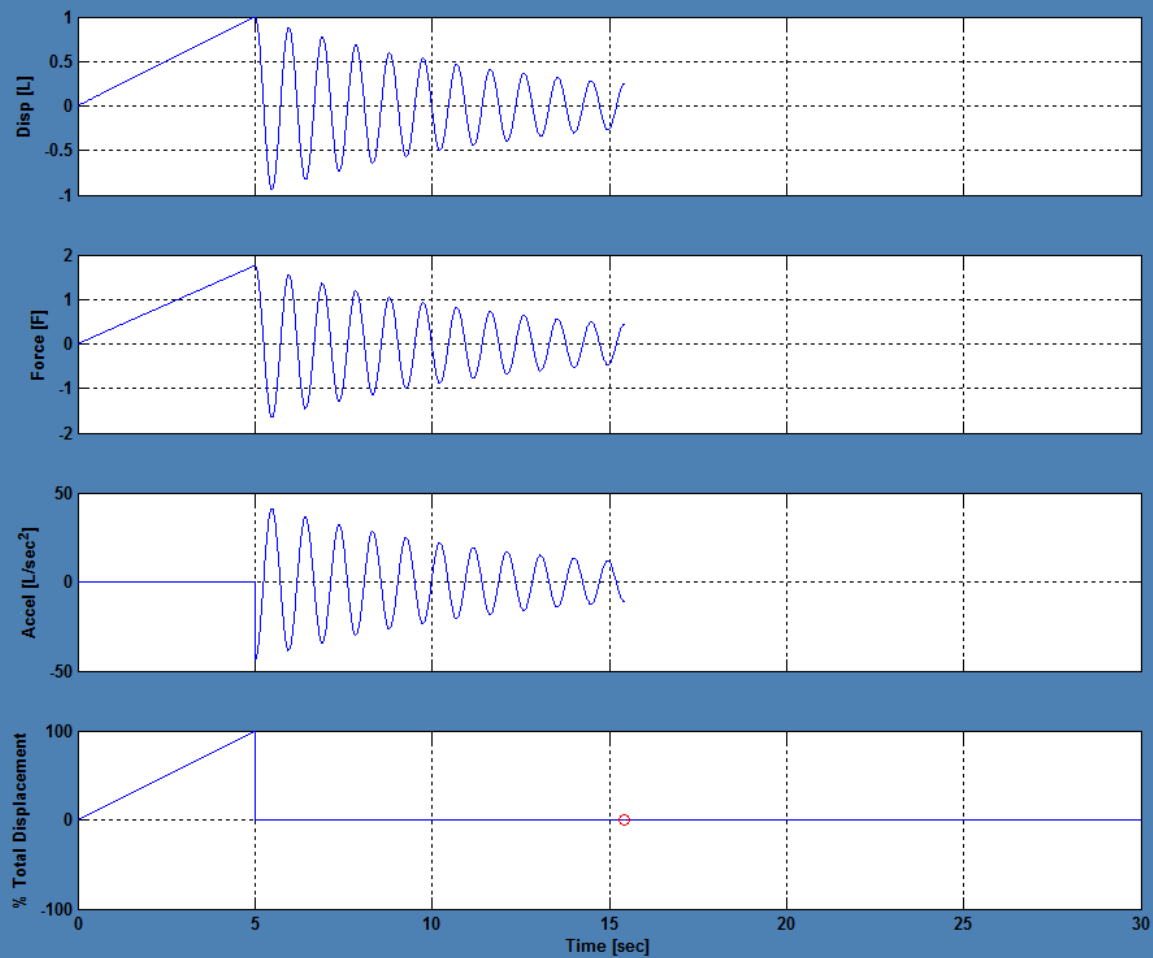
Structural Output: DOF 2







Structural Output: DOF 1



Structure

Loading

ExpSetup

ExpControl

Analysis

User Tips



Analysis

dt: < 0.094696 ?

Write TCL File

Generate Report

Would you like to animate the response? ?

☐ No☒ Yes

Run New Test

Quit